



ANAALA

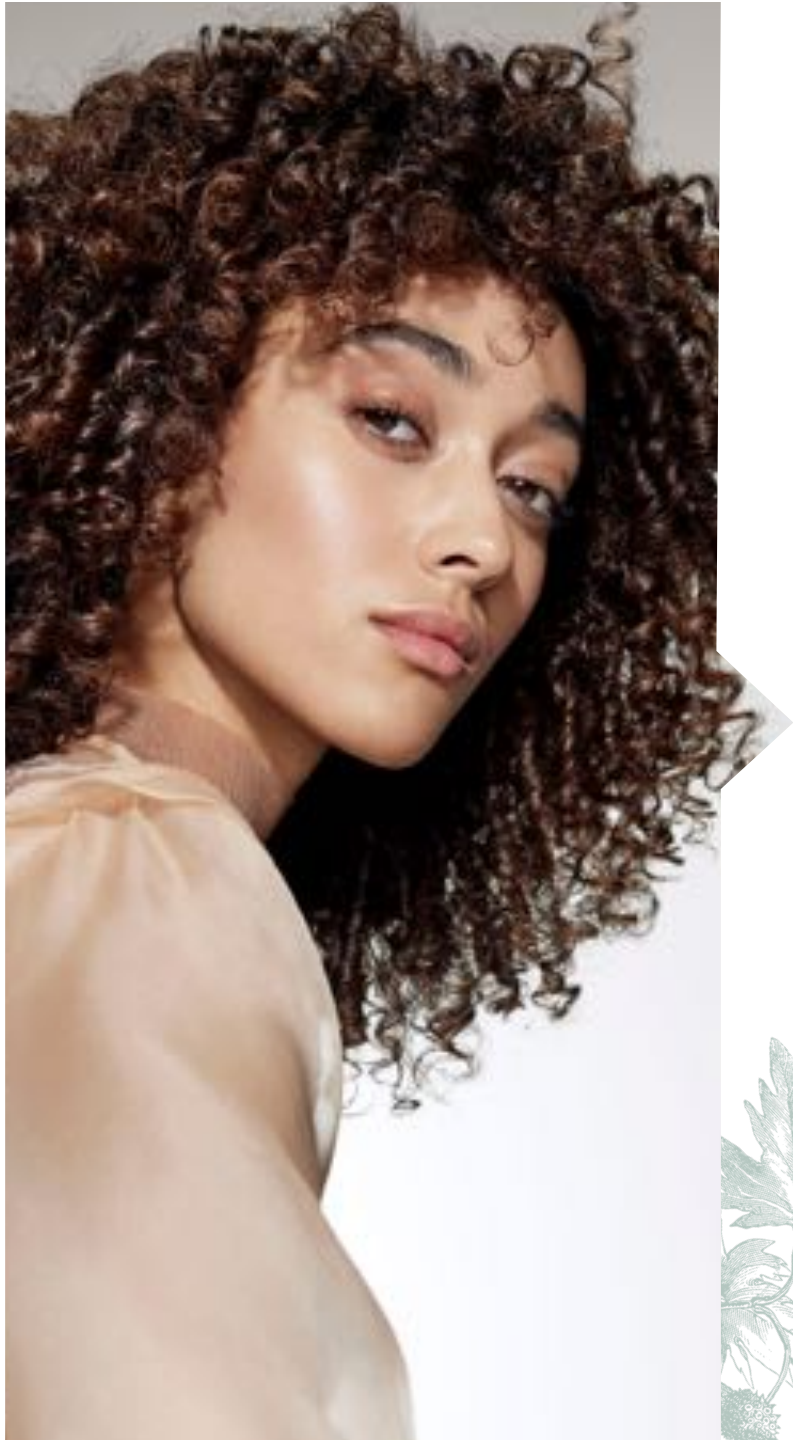
salon and spa

ATWOOD 📍 2929 Atwood Avenue | Madison, WI 53704
☎ 608.244.2161

HILLDALE 📍 4506 Regent Street | Madison, WI 53705
☎ 608.441.6918

ANAALA.COM •   

AVEDA
THE ART AND SCIENCE OF PURE FLOWER AND PLANT ESSENCES



HAIRCUTS & STYLING

All of our haircuts begin with a relaxing scalp ritual using your favorite Aveda Composition Oil™ and ends with a blow dry style. Prices reflect the experience of your stylist.

HAIRCUT	\$30+
CHILDREN'S HAIRCUT <i>Children under 10</i>	\$20+
SHAMPOO & BLOWOUT	\$30+
THERMAL STYLING <i>Curling or flat iron styling. Add to any haircut or color.</i>	\$25+
FORMAL STYLE/UPDO	\$60+



COLORING & FOILING

At Anaala Salon and Spa, we exclusively use Aveda hair color. Aveda's naturally derived formulas capture the active energy of plants to immerse hair in healthy color.

FULL COLOR	\$90+
COLOR RETOUCH	\$55+
PARTIAL FOIL	\$120+
FULL HEAD FOIL	\$90+
COLOR & PARTIAL FOIL	\$110+
FULL BALAYAGE	\$125+
PARTIAL BALAYAGE	\$110+
CORRECTIVE COLOR	\$85+
<i>Consultation required prior to booking</i>	
AVEDA COLOR GLOSSING	\$35+
<i>Price by consultation only</i>	
ADDITIONAL COLOR USAGE	\$15/PER
<i>Per additional color batches when added to a hair service</i>	
EYEBROW TINTING	\$15+



COLOR ADD-ON

AVEDA BLONDE FINISH	\$35+
AVEDA GREY BLENDING	\$35+



RETEXTURIZING

*Consultation required prior to initial service.
Please call guest care to reserve your appointment.*

**SMOOTHING
KERATIN TREATMENT** \$275+

PERMANENT WAVE \$100+

**LONG HAIR PERM /
SPECIALTY WRAP** \$150+

BOTANICAL HAIR TREATMENT \$25+

Add this on to any haircut or color to treat dry, oily or sensitive scalp and hair using a custom blend of aromatic oils that nourish while balancing mind and mood.

**PRAMASANA™ SCALP
TREATMENT** \$30+

Does your scalp need a detox? Awaken and free your scalp of daily build-up to reveal a nourished, smooth and exfoliated scalp. Great for those who do not shampoo daily. Add to any haircut or styling service.

AMERICAN WAVE \$350+

The American Wave creates soft, natural looking wave and curl patterns for today's style-conscious guest. Whether you want to increase volume, make curls, or add beach waves this professional service offers the permanent creation of texture. By consultation only.

HAIR EXTENSIONS

Consultation required prior to initial service.

Hand-Tied Hair Extensions

Hand-tied extensions are a method where our stylists attach wefts of hair onto the row of beads by hand-tying the wefts in with nylon thread. The number of rows and wefts used depend on the client's hair density, length and overall desired end look.

Tape-in Hair Extensions

Tape-ins use a medical-grade tape adhesive to 'sandwich' pieces of a client's natural hair in between two pieces of extensions. The two tape tabs attach and create the section of the tape-in and is repeated throughout the head.

These detailed processes are ideal for those looking to add more volume or length that looks natural without putting too much tension on the scalp or hair.

HAIR EXTENSION SEW-INS

\$125+ PER ROW

Install cost

HAND-TIED HAIR - BEST FOR FINER HAIR

14" HAND TIED - 12G	\$140+
18" HAND TIED - 15G	\$210+
22" HAND TIED - 21G	\$315+

MACHINE-TIED HAIR - BEST FOR THICK HAIR

18" MACHINE TIED - 80G	\$315+
22" MACHINE TIED - 100G	\$550+

TAPE-IN

\$120+

Install cost

TAPE-INS - 10 SANDWICHES

10-12" TAPE-INS	\$205+
14-16" TAPE-INS	\$260+
18-20" TAPE-INS	\$330+
22-24" TAPE-INS	\$520+





MEN'S

MEN'S HAIRCUT	\$30+
BEARD/MUSTACHE TRIM	\$15+
LINE UP/NECK SHAVE	\$10+
GREY BLENDING	\$25+
FULL PERMANENT COLOR	\$55+
HIGHLIGHTING	\$45+
CONDITIONING TREATMENT	\$15

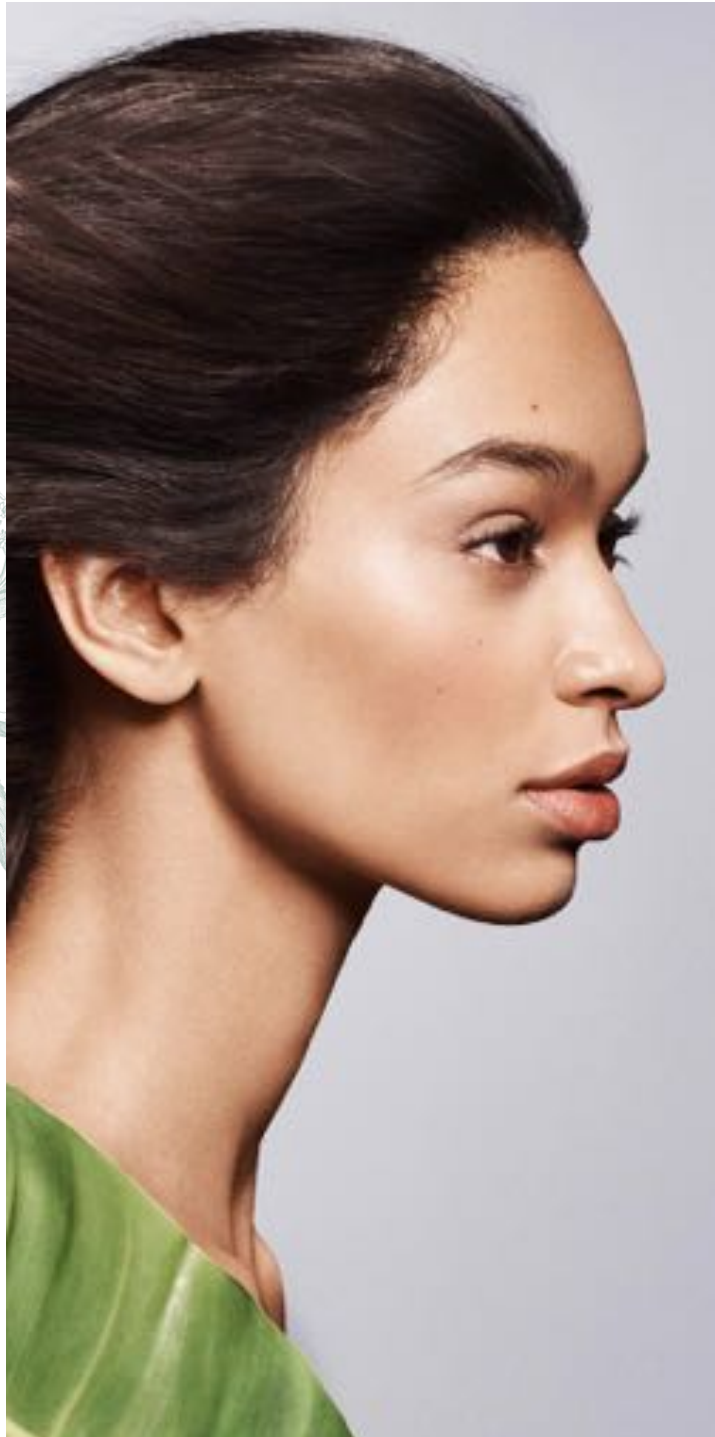


MEN'S WAXING

BROWS	\$20+
BACK	\$45
CHEST	\$40
NECK	\$30
NOSE	\$10
EARS	\$10

MEN'S FACIAL/ SKIN CARE

PURE FOCUS FACIAL	\$45
EXFOLIATION PEEL	\$25
BACK FACIAL	\$55
MANICURE	\$25
PEDICURE	\$35



FACIALS

Facial treatments are recommended on a weekly or monthly basis to achieve and maintain optimal results. Your skin therapist will develop a comprehensive treatment plan designed to meet your individual needs and expectations.

PERFECTION FACIAL

\$90+

A customized aromatherapy facial for any skin type featuring specialized cleansing to restore healthy skin.

TULĀSARA™ FACIAL TREATMENT

\$90+

Dry, oily, aging, uneven, sensitive and acneic skin conditions and eye concerns can all be addressed with a customized Tulāsara™ facial treatment.

OUTER PEACE™ ACNE RELIEF TREATMENT

\$90+

Increase your outer peace with this multi-faceted approach to treating skin breakouts.

AVEDA'S PLANT-POWERED ALTERNATIVES TO MICRODERMABRASION AND CHEMICAL PEELS

DUAL EXFOLIATION PEEL

\$110+

The Dual Exfoliation Peel is Aveda's latest advancement in non-invasive, skin-renewing treatments.



FACIALS

AVEDA'S PLANT-POWERED ALTERNATIVES TO
MICRODERMABRASION AND CHEMICAL PEELS

BOTANICAL SKIN RESURFACING TREATMENT **\$25+**

Go beyond microdermabrasion, and energize the look of your skin with a professional facial treatment that helps smooth skin texture and reduce the appearance of lines, wrinkles, and pore size while significantly increasing radiance—all with less visible redness and irritation than a microdermabrasion procedure. The Botanical Skin Resurfacing Treatment is an add-on to any facial.

PERFECTING PLANT PEELSM ADD-ON **\$25+**

Advancing the science of chemical peels, this professional facial treatment helps retexturize skin; smooth fine, dry lines; refine the look of pores; and restore radiance.

PCA PEEL **\$100+**

Professionally applied peel solutions exfoliate dead skin cells and help healthy skin cells rise to the surface.

BRITE EYES TREATMENT **\$20+**

Add this experience to any facial. This renewal treatment for the delicate eye area is designed to soothe and brighten tired, sagging eyes, eliminate puffiness and smooth fine lines.

BARE BACK **\$75+**

A facial for your back! Stress relief comes along with the cleansing, exfoliating, extractions and back massage.



WAXING

Smooth, hairless skin achieved the holistic way.

BROWS	\$20+
LEGS - HALF	\$40+
LEGS - FULL	\$70+
LIP OR CHIN	\$15+
<i>(Available at both Anaala locations.)</i>	
UNDERARMS	\$40+
ARMS - HALF	\$30+
ARMS - FULL	\$40+
BACK	\$45+
CHEST	\$45+
BIKINI	\$40+
BRAZILIAN	\$75+
LEGS & BIKINI	\$110+
LEGS & BRAZILIAN	\$145+



AIRBRUSH TAN

SJOLIE CUSTOMIZED AIRBRUSH SPRAY TAN

\$30+

SJOLIE spray tan solution is made of naturally derived ingredients, certified vegan by PETA. Paraben free, erythulose free and fragrance free.



MICROBLADING

If you have thinning brows, little-to-no brows, or if you just don't want to spend the time filling in your brow day after day microblading is a great solution.

We customize eyebrows with a unique shape, shade and arch for every guest. Pigment is then placed under the top layer of skin to keep your customized brow for 18-24 months.

Let Anaala create a flawless natural-looking brow just for you. Consultation required prior to initial service.

MICROBLADING/MICROSHADING \$400

Lasts 18-24 months. Includes 6-8 week touch-up.

COMBINATION BROW \$450

Brow using both techniques. Includes 6-8 week touch-up.

BROW TOUCH-UP \$200

6-18 month touch-up. (Existing clients)



LASHES

Xtreme Lashes® is a revolutionary new product that provides you with longer, thicker, more luscious and more natural-looking eyelashes. Xtreme Lashes® are composed of single synthetic strands of eyelashes applied one by one directly to your own individual eyelashes for a natural look and feel. Xtreme Lashes®, when applied correctly, look and feel as if they are your own eyelashes. Each synthetic eyelash extension is shaped and polished to replicate the natural eyelash. Once applied, Xtreme Lashes® extends your beauty every day, all day and all night indefinitely, with touch-ups required every two to three weeks.

Scheduling and Cancellation Policy

We value our clients and want to ensure you get your preferred appointment time and the service you deserve. In order to do this, we require a \$50 deposit on all full sets of lashes.

As a professional courtesy to your stylist, we do have a 48-hour cancellation policy. If you need to cancel or reschedule your appointment, we ask you to call by 6pm two days prior. Any last minute changes, or no call/no shows, may lose their deposits.

INTRODUCTORY LASH SETS

INTRO SET \$175

For those who want a very natural look or who would like to try Xtreme Lashes®, the Intro Set is for you. 45-60 lashes per eye; 75 minutes.

FULL LASH SETS

FULL XTREME SET \$250

The Full Xtreme Lashes® set completes your look with a voluminous set of professionally applied lashes of various lengths, thicknesses, and curvatures to make your eyes shine! 65-85+ lashes per eye; 120 minutes.

MOST XTREME SET \$325

For those looking to create a wow factor with lashes. Your professionally applied lashes will have maximum thickness and length. 90-130+ lashes per eye; 150 minutes. Includes a FREE makeup remover or one two-week lash fill.

LASH TOUCH-UPS

NEW CLIENT BASIC RELASH \$125

First-time relash service for new clients already wearing lash extensions and transferring from another lash stylist. 90 minutes.

Please note: At the time of appointment, an assessment will be made about the quality of existing lash application. Please be advised this may require full removal and rescheduling for a new set of lashes.

RETURNING CLIENT RELASHES

Please book according to when lashes have shed. If all lashes have shed, book the new full set you desire from the menu below.

ONE-WEEK LASH FILL	\$50 45 MINS
<i>Up to 1/8 of your Xtreme Lashes®</i>	
TWO-WEEK LASH FILL	\$80 45 MINS
<i>Up to 1/4 of your Xtreme Lashes®</i>	
THREE-WEEK LASH FILL	\$120 60 MINS
<i>Up to 1/2 of your Xtreme Lashes®</i>	

LASH FILL PACKAGES

Packages include six fills, or the VIP Experience of a full year of fills, at one, two or three weeks. All VIP packages include a complimentary brow shaping at time of fill and 10% off all retail for the year.

PACKAGE	STANDARD LASH PACKAGE: SIX FILLS	VIP EXPERIENCE: FULL YEAR OF LASH FILLS
ONE-WEEK LASH FILL	\$270	\$2,340
TWO-WEEK LASH FILL	\$420	\$1,820
THREE-WEEK LASH FILL	\$630	\$1,785

LASH LIFT

LASH LIFT **\$60+**

A lash lift is a perm for your lashes that shapes them into the perfect eye-opening curl for approximately six weeks. Pair it with a lash tint to make lashes stand out even more.

LASH LIFT AND TINT **\$85+**

BROWS

BROW LAMINATION **\$50+**

Brow lamination is basically a perm for your brows, as it gives them a set, uniform shape for an extended period of time. Instead of curls, a setting lotion helps brow hair stay brushed up and lifted upward for about six weeks. With brow lamination, we can raise the brow arch, extend the brow tails, give you a fuller brow by lifting the hair or give brows a messy, fluffy look.

BROW LAMINATION AND TINT **\$60+**





TIPS & TOES

Tips & Toes services are available at both locations but nail services at Atwood are waterless.

SAVE THE NAILS! MANICURE \$40+

An intense hydrating manicure for rough cuticles, dry skin and brittle nails combined with a rich moisture Aveda masque that leaves your skin noticeably softer.

(French add \$7)

GEL POLISH MANICURE \$50+

Our newest nail service offers up to 14 days of wear with a mirror finish and zero drying time.

(French add \$7)

BARKING DOGS PEDICURE \$55+

Soothe tired, aching feet with an aromatherapy soak, grooming, massage and polish.

(French add \$7)

PURE FOCUS MANICURE \$25

This service does not include nail polish.

PURE FOCUS SPORT PEDICURE \$35

Get down to business with this no fuss nail service to keep your cuticles, calluses and nails looking professional and neat.

POLISH CHANGE \$25+

Refresh your tips with a new coat of polish.

(French add \$7)